

MONTHLY MEMBERSHIP PROGRESS REPORT

District 28 T

Results as of: 3/31/2024

GMT:

LOCATION UTAH

GMT CA

Clubs			
RESULTS FOR 2023-2024			
QUARTER	NEW CLUB GOAL	NEW CLUBS	DROPPED CLUBS
JULY/AUG/SEPT	0	0	0
OCT/NOV/DEC	1	0	0
JAN/FEB/MAR	0	0	0
APR/MAY/JUNE	0	0	0

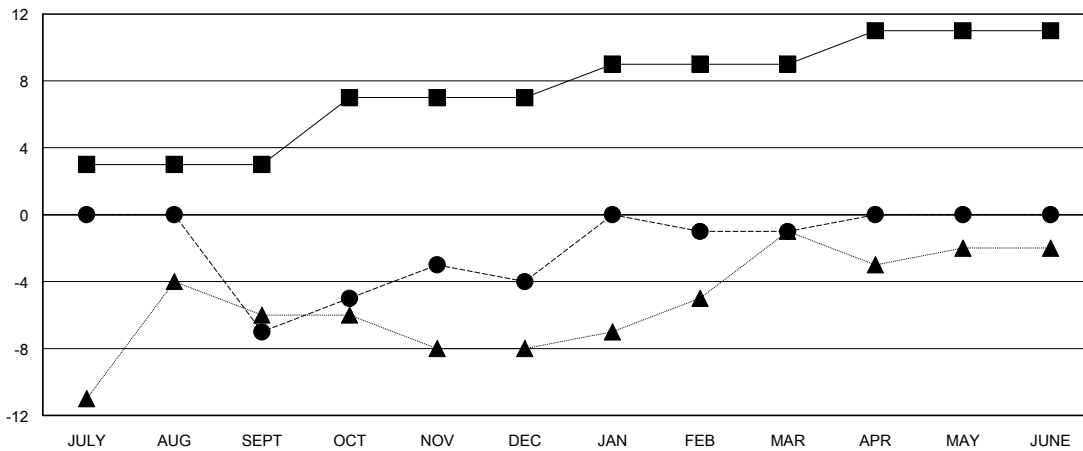
Members			
RESULTS FOR 2023-2024			
QUARTER	MEMBER GROWTH NET GOAL	MEMBER GROWTH ACTUAL	DROPPED MEMBERS ACTUAL (including transfers)
JULY/AUG/SEPT	3	9	16
OCT/NOV/DEC	4	4	1
JAN/FEB/MAR	2	7	4
APR/MAY/JUNE	2	0	0

GOALS AND ACTUAL NEW CLUBS CUMULATIVE



- - CURRENT YEAR GOALS FOR NEW CLUBS
- - CURRENT YEAR ACTUAL NEW CLUBS
- ▲ - LAST YEAR ACTUAL NEW CLUBS

GOALS AND ACTUAL MEMBERS CUMULATIVE



- - MEMBER GROWTH NET GOAL
- - MEMBER GROWTH ACTUAL
- ▲ - LAST YEAR MEMBERSHIP ACTUAL

DROPPED CLUBS: 0	11 CLUBS OF 25 ADDED 1 OR MORE NEW MEMBERS	GENDER DISTRIBUTION
		MALE 343 (66.60%)
		FEMALE 172 (33.40%)
DROPPED MEMBERS	CLICK HERE FOR CUMULATIVE MEMBERSHIP DATA	TOTAL FAMILY UNIT MEMBERS 174
DECEASED 5		FAMILY MEMBERS PAYING HALF DUES 88
CLUB CANCELLED 0		
OTHER 16		
TOTAL 21		